



**Western
Sydney
Airport**



Out of Hours Works in your area

Dear neighbour,

Western Sydney International Major Earthworks team will be start construction works to build a permanent water basin near Badgerys Creek Road between **5am and 8pm, Monday to Friday, commencing Monday 2 November 2020, weather permitting**. These works will continue until May 2021.

Machinery that will be used include scrapers, bulldozers, graders, excavators, dump trucks, light vehicles, and other associated machinery.

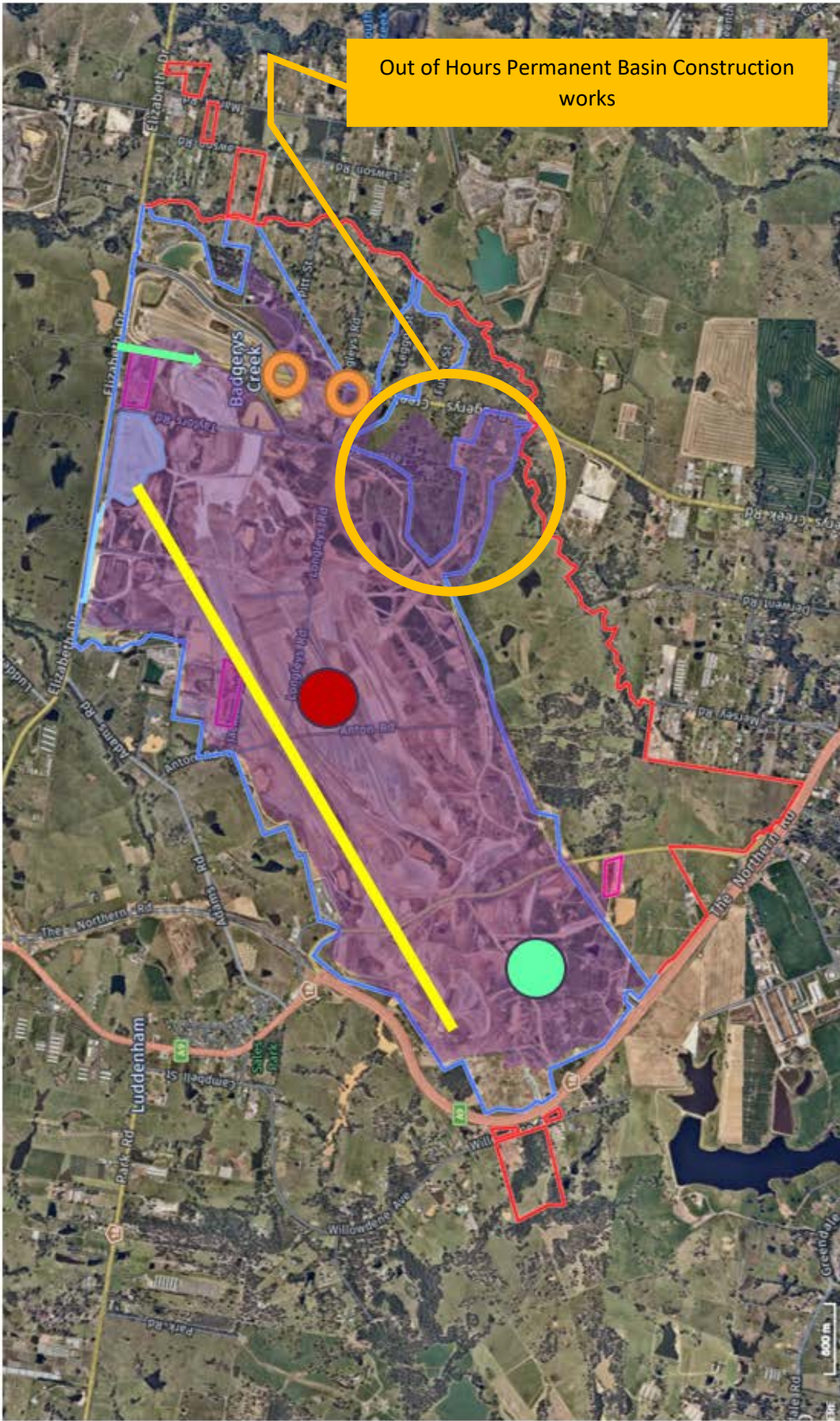
These works may cause some noise and have been assessed, with impacted residents being notified. Every effort will be made to minimise impacts to residents.

These measures include locating out of hours works as far away from residents as possible, restricting intrusive activities (such as crushing) to normal working hours, modifications to machinery such as the use of non-tonal reversing beepers, positioning of site entry and exit points as far away from residents as possible, staggering work in certain areas and noise monitoring

The location of these activities can be seen circled in yellow on the map overleaf. These works form part of the existing out of hours earthworks activities.

If you have any enquiries about these works please contact the 24hr project team information line at 1800 972 972 or email info@wsaco.com.au.

We thank our neighbours for their patience during these works.



Out of Hours Permanent Basin Construction works



- Legend**
- Major earthworks area
 - Western Sydney Airport area
 - Maintenance workshop
 - Sandstone stockpile
 - Traffic control
 - Earthworks activities (Out of Hours)
 - Future terminal location
 - Future rail and road connection
 - Future freight precinct location
 - Future runway location

Map is not to scale and identified 'future' landmarks locations may vary. October 2020.

Connect with us

1800 972 972
westernsydney.com.au