



**Western
Sydney
Airport**



Early earthworks

September - October 2019

Elizabeth Drive and Badgerys Creek Road, Badgerys Creek

Dear neighbour,

Early earthworks for Western Sydney International are continuing with the construction of a new, realigned section of Badgerys Creek Road between Elizabeth Drive and Longleys Road as well as completion of cut and fill works, totaling around 1.8 million cubic metres of earth. This work includes:



- construction of a new roundabout and civil works on Elizabeth Drive
- bulk earthworks
- vegetation clearing
- asphaltting and installation of concrete pavements
- new stormwater drainage installation
- adjustment and connection of utilities

Elizabeth Drive night work

Work to connect new watermain infrastructure will be carried out from 9pm, Friday 20 September until 3am, Saturday 21 September, weather permitting. This work is being completed at night to minimise service disruption to residents and businesses.

Night work on Badgerys Creek Road realignment

Installation of concrete pavements for the new alignment of Badgerys Creek Road will commence on Wednesday 18 September, weather permitting. Concrete pours will be completed during the day and saw cutting to create joints in the pavement will be carried out between 6pm and 12am on weekdays. This work is required at night to enable

the concrete pavement to be a certain hardness before cuts can be made. The work is not expected to be noisy and will be completed by Friday 18 October, weather permitting.

Traffic changes

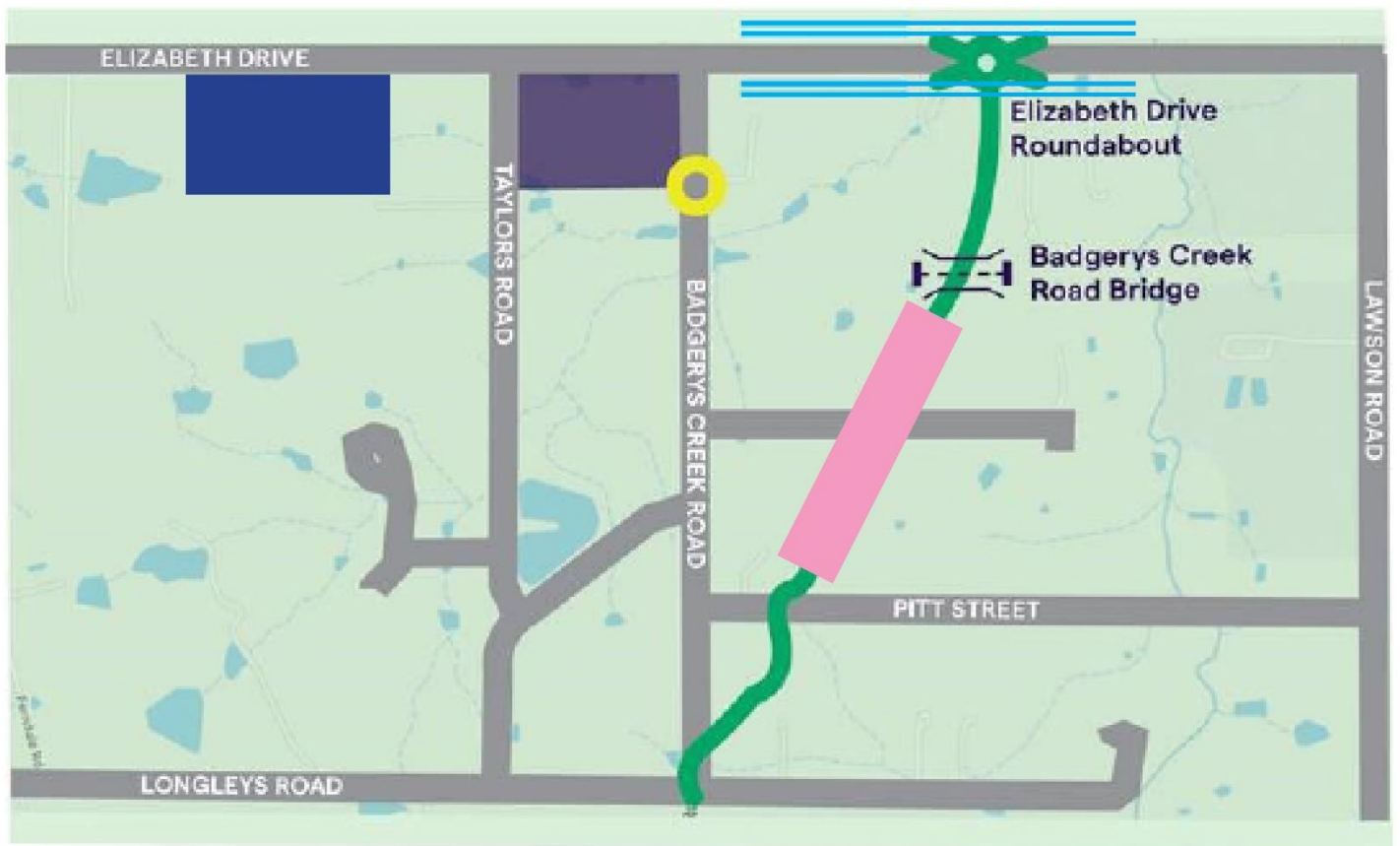
Temporary traffic changes such as intermittent stoppages and varied speed limits will be in place to ensure the safety of motorists, residents and workers. Please keep to the speed limits and follow the direction of traffic controllers and signs. As the Project site area is separated by Badgerys Creek Road, any plant or machinery crossing the Road is carried out under strict traffic control.

Early earthworks are being carried out by the CPB Contractors and Lendlease Joint Venture (CPBLL JV) and are expected to be completed in 2020.

We look forward to working closely with our neighbours as we work to deliver Early earthworks for Western Sydney International and will continue to update you as work progresses with the construction of the Airport.



Badgerys Creek Road realignment, September 2019



Map not to scale

LEGEND

-  Temporary roundabout
-  Site compound
-  Badgerys Creek Road re-alignment
-  Water main works
-  Sandstone stockpile
-  Concrete cutting



Where are we working? Elizabeth Drive and Badgerys Creek Road



Construction hours

Mon to Fri 6am – 12am
Friday 20 September 9pm – 3am



Project contact details

To find out more about the project, please contact:

Early earthworks

Ph: 1800 951 171
WSAenquiries@cpblljv.com.au

Western Sydney Airport

Ph: 1800 972972
info@wsaco.com.au



Traffic control

Traffic controllers and signage will be in place during construction. Please allow extra travel time and be aware of temporary speedzones.



We speak your language

Need an interpreter? Call the Translating and Interpreting Service on **131 450**.