



Airport construction – community update

September 2021

Dear Neighbour,

These updates are aimed at keeping you informed about our construction activities. Work on site was paused for a few weeks in line with the latest NSW Health Public Health Order. A slow ramp-up of the workforce will continue over the coming weeks for our major earthworks' contractors, CPB Contractors and Acciona (CPBACC JV).

The terminal precinct was handed over to Multiplex, who are currently finalising the detailed design, with construction scheduled for later this year. Currently activity in the terminal area is limited to site investigations, surveying, establishing access roads and worker facilities.

More information about the terminals features and other activities at Western Sydney Airport can be found in our latest Community Newsletter, <https://westernsydney.com.au/your-airport/whats-new> or please contact us for a hard copy.

With personal contact being limited due to COVID restrictions and our focus to transition to paperless, we would appreciate your support in helping us issue our notifications electronically. Please send an email to info@wsaco.com.au with your name, best contact number, address and preferred email address.



We welcome your feedback on how we can better engage with our community during these restrictions.

For further Airport information or enquiries about our construction activities please contact our Information line on 1800 972 972 or send an email to info@wsaco.com.au.

We regret to advise that due to COVID -19 restrictions the Experience Centre is temporarily closed.

Need an interpreter? Call our translating and interpreting service on 131 450.

Ongoing earthworks activities include:

- Major earthworks across the Airport site. This includes taking earth from the high points of the site and using that material to fill in the low points
- Excavation using surface miners at the western end of the Airport site
- Importation of sandstone material
- Water treatment of excess rainwater and discharging if it cannot be used for dust suppression
- Installation of permanent airport drainage across the site
- Ongoing surveying of site to ensure each layer of earth placed is at the correct level
- Permanent landscaping. Spread of topsoil which will form the base to grow vegetation in the future
- Heavy machinery maintenance.

Work outside of standard construction hours:

Out of hours work is required to support our earthworks activities, which require use of surface miners, excavators, trucks, cranes and lighting. Every effort is made to minimise the impact to our neighbours, by locating out of hours works as far away from residents as possible, restricting intrusive activities (such as hydraulic hammering) to normal working hours and modifying machinery (eg, use of non-tonal reversing beepers). We aim to notify our neighbours when out of hours work is predicted to be audible. Noise monitoring is undertaken.

As of 12 September you may notice our surface miners working on a Sunday from 6am to 6pm. This replaces surface miner night works on Saturday and Monday nights.

Permanent airport drainage night works to commence:

We will be commencing night works to install drainage lines around the site. This will allow for safe construction of the drainage lines, whilst heavy machinery is not operating in the same areas. These works will take place in various areas of the site. You may notice lighting towers, excavators, cranes, concrete trucks and light vehicles. This work is expected to commence mid-September 2021.

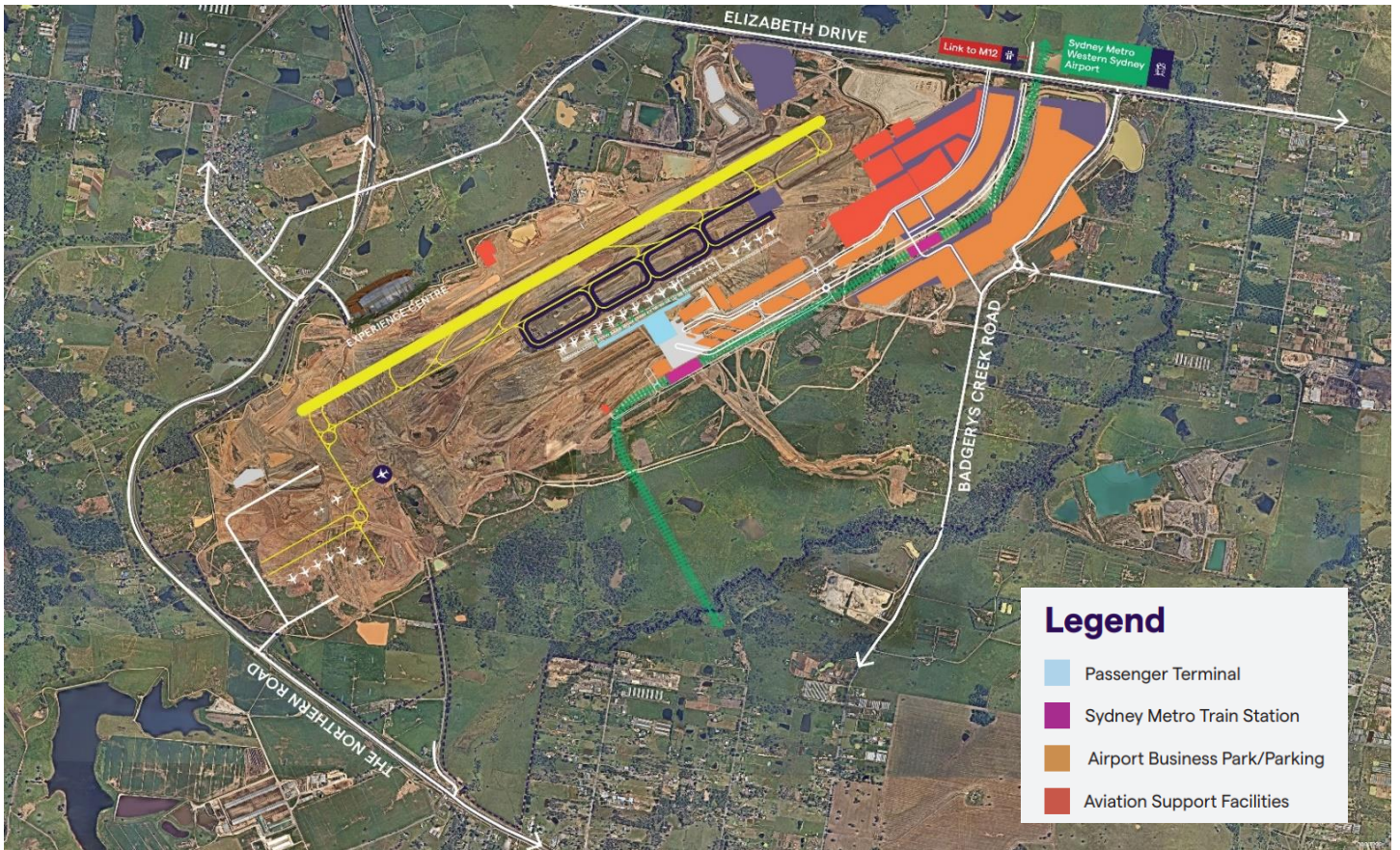


Image 1: Runway and Terminal Footprint area (July 2021)
 Image 2: Terminal pad (June 2021)

Standard construction hours

- Mon to Fri 7am – 6pm
- Sat 8am – 1pm

Out of hours works
 Mon to Fri 5am - 8pm | Sat 6am - 5pm (as required)

- *Earthworks activities until late 2022.*

Mon to Sun | 5am – 11pm

- *Workshop maintenance activities*

Mon to Sat | 24 hour operations

- *Drainage installation*
- *Importation of sandstone, heavy machinery and equipment*
- *Other minor works determined not to have an impact on the community*

Mon 6am – midnight | Tue to Fri 24 hours | Sat 12am to 6pm | Sun 6am – 6pm

- *Sandstone excavation works (Surface Miner)*
- *Other minor works determined not to have an impact on the community*